

COMPU 360 BYTES

VOLUME 8 - 2010

AUGUST, 2010

This FREE newsletter offers news and tips to our customers regarding upcoming trends in technology.

Our goal is to keep our customers well informed about computer technology.

IN THIS ISSUE:

Skype is the limit 1

Google Street View 1

Explore IE 8 2

What are web slices in IE 8 3

Compu 360 News 4

Skype is the limit

Skype is a software application which allows users to talk over the Internet. To enhance their experience, users can use a webcam and see each other in real-time.

Calls to other Skype users are free, while there is a charge for calls to landline or mobile phones.

Skype is mainly used for instant messaging, file transfer and video conferencing. You can even do conference calls with three or more people.

In order to use Skype, you will need to register on its website, which is free.

Skype's voice chat allows users to communicate through both instant messaging and voice chat. For a group of people who want to chat on Skype,

you can use Skype's text chat client.

The SkypeIn service allows Skype users to receive calls on their computers dialed by regular phone.

Skype introduced Video conferencing in January 2006. It can be used on Windows or Mac OS X platform. Skype 2.0 for Linux, released in March 2008, supports video conferencing on Linux systems.



Is Skype Secure?

Skype is a secure communication and comes with encryption enabled by default. It uses widely trusted encryption techniques: RSA (Rivest, Shamir and Adleman). RSA is an algorithm for public-key cryptography. RSA is widely used in e-commerce protocols.

Google Street View

I stumbled upon Google Street View while looking at some Google maps. I was very impressed by the different views that it offers. Along with the standard bird's-eye view, you can zoom and look around the streets. This is a good virtual tour and puts you at the street level as though you were on the street walking along and looking at the street and what is around a certain location.

So how did Google do this?

Well, actually there was no magic bullet for this one. Google sent out cars with 360-degree cameras in them. These cameras took photographs at street level. So far,

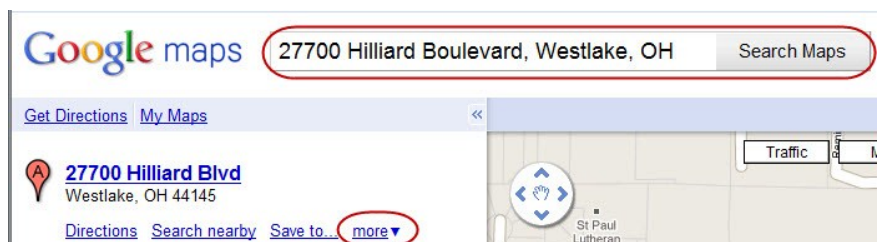
Google claims to have visited most major cities,

and they are constantly adding new streets and cities.

So next time you are mowing your lawn, look your best and give a nice smile as a Google car drives by.

How to use Google Street View?

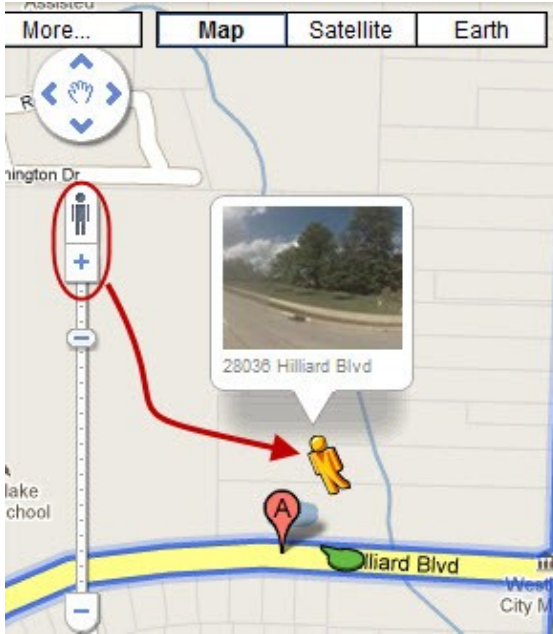
First, go to <http://maps.google.com>. Type in the address you want to see via Google Street View.



Click **Search Maps** to find the location.

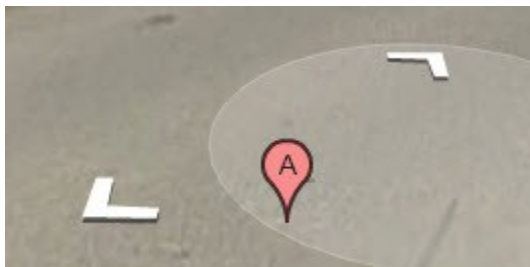
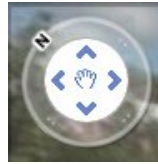
Second, to view the map from street level, click

on the yellow symbol of the man. Then, drag it on



to the map. Note that if the Street View is not available, then the option to drag and drop the yellow symbol is not available.

Third, once you drag the symbol of the yellow man on to the chosen street, you will see the Street View. You can hold down the left mouse button and move it around the street view to look around. To look around, you can also use the arrows on the left-hand side towards the top of the map.



To advance forward or step backwards on the street, you can use the arrows shown on top of the street view.

Google Street View can be used to explore cities and towns around the world.

If you do not find your street in Google Street View, then check back and it may be added soon.

Explore Internet Explorer 8

Sometimes, Internet Explorer (IE) 8 seems to run slow. In this article, we will look into some of the tips and tricks to help IE run faster and ensure that it does not crash unexpectedly.

After using IE for a while, it collects a lot of 'junk'. Well, the good news is that it only takes a few minutes to get rid of unwanted toolbars, plug-ins, and other such unwanted items. Here are a few to-do items to speed-up IE 8:

Remove unwanted extensions

To remove unwanted extensions, from the Menu Bar, click **Tools** → **Manage Add-ons**. If you notice that you do not need an add-on anymore, select **Disable**.

If you disable an add-on and find out that you actually need it, just repeat the steps above and choose **Enable** this time.

Disable Accelerators

Using Accelerators you can gain access to your favorite online services, like searching, shopping, and so on. However, if you do not need certain accelerators, you can disable them.

To disable accelerators, click **Tools** → **Manage Add-ons**. From the left panel of the Manage Add-ons window, click on **Accelerators**. You will see a list of accelerators in the right-hand window. Click and choose an unwanted accelerator, then click on the **Disable** button towards the bottom of this window.

Pop-up Blocker

Pop-ups from websites slow down your browser. To disable pop-ups, click **Tools** → **Internet Options** → **Privacy**. In the check box for Turn on Pop-Up Blocker, click with the mouse so that it has a check mark in it. This will enable Pop-up blocker.

If you want to see pop-ups from a website, then click **Settings** and check the sites which are allowed to display pop-ups.

Configure the cache

Check the cache Disk space to use. By default this value is set to 50 MB. There are two things that you can do here:



1. Make sure that the cache size is set to 50MB.
2. If you have more than one hard drive and one your second drive is faster, move the temporary files folder to the second hard drive.

Disable automatic newer version checking

Some programs reconfigure Internet Explorer to check for newer versions of a webpage every time you visit it. This slows down your browser. To change this setting, click **Tools** —> **Internet Options** —> **Browsing History** —> click on the **Settings** button. Under the “Check for newer versions of stored pages” section, click on **Automatically** radio button. Once done, click on **OK** button to accept changes.

Clear Everything

Sometimes IE8 cache become corrupted, even if everything is configured correctly. In such situations, web pages load slower than usual.

To fix this issue, click **Tools** —> **Delete Browsing History**, click in the check box for Temporary Internet Files, clear all the other check boxes, and then click the **Delete** button..

WHAT ARE WEB SLICES IN IE8

Most common way to save your favorite web links is using the Favorites folder to save them.

With IE8 you can use a new feature called Web Slices. It enables you to save your most commonly viewed websites to the toolbar at the top of the screen. When you click on them you get a miniature version of that website on the screen.

To add a web slice for a website, use the following steps:

Get Internet Explorer 8

This feature is new to IE 8. As such, you will need to download IE8 from Microsoft website,

Find Web Slices

Go to the Add-ons gallery: <http://ieaddons.com/en/webslices>

Note that some of these web slices may only work in certain countries.

Add a Web Slice

Once you have found a web slice that you would like to add, simply click the **Add to Internet Explorer** button.



The Add a Web Slice window pops up in IE. Click the **Add to Favorites Bar** button.

View a Web Slice

To view a web slice, simply click on the downward pointing arrow next to the link and you will see the web slice with the latest news.

To refresh the information in a web slice, click the refresh arrows at the bottom of the web slice drop-down box.





Compu 360, LLC

P.O. Box 45053
Westlake, OH 44145

Phone: 440-225-1015

E-mail: info@compu360.com

Quality Computer Solutions for Home or Business. On-Site Service that can save you up to 50% or more over our competition.

Compu 360 specializes in computer repairs, virus removal and anti-virus installation, software upgrades, web design, and database programming. We provide a variety of services thus saving you money, time and the hassle of shopping around for different vendors for quality and professional service.

We offer all of our services at client-site, at home or business.

Coupon!!!

Call us for Service & mention the code: PC10 to save \$10 Off Any Service

Seniors save an additional 5% on Any Service.

Save up to 50%

Compu 360 News

Please call or e-mail your comments or suggestions.



In the month of July, we added GIMP classes to our instructor-led software training.

GIMP is an open source image editing software. It is freely available on the website:
<http://www.gimp.org>

There are three GIMP classes which were added to our course offering:

- Introduction to GIMP
- Intermediate GIMP, and
- Advanced GIMP.

If you would like us to add you to our e-mail list to receive this newsletter, please e-mail us at: info@compu360.com.

For a full listing of computer classes and services that we provide, please visit our website at:
<http://www.compu360.com>